

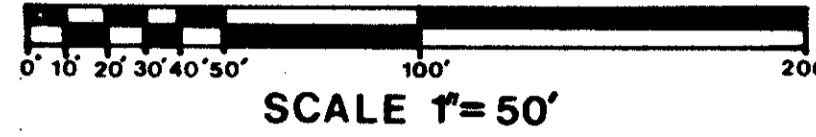
MARSH POINTE AT WESTLAKES OF PALM BEACH GARDENS, P.U.D.

378-002

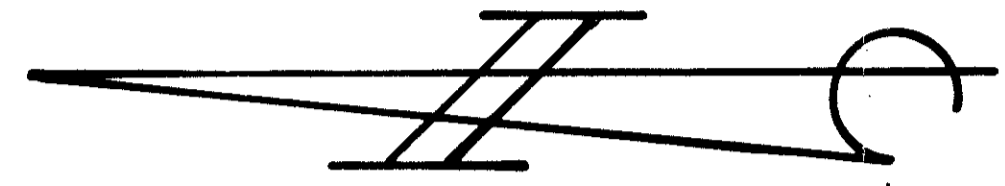
137

IN THE W.1/4 OF THE N.W. 1/4 OF THE N.W. 1/4, OF SECTION 34, TOWNSHIP 41 SOUTH, RANGE 42 EAST, PALM BEACH COUNTY, FLORIDA

SEPTEMBER 1988



SHEET 2 OF 2



EASTPOINTE PLAT 10
PLAT BOOK 41, PAGES 105-108

EASTPOINTE PLAT 12
PLAT BOOK 41, PAGES 108-112

NORTH LINE OF SECTION 34/41/42
S 89°14'17"E
328.17'

EAST LINE OF THE WEST 1/2 OF THE WEST 1/2 OF THE NORTHWEST 1/4 OF THE NORTHWEST ONE-QUARTER OF SEC. 34/41/42

HOOD ROAD

ADDITIONAL EIGHT FEET OF WAY CONVEY TO PALM BEACH COUNTY (OR 5, 5510, PAGE 11195)
R/W RECORDED IN DB 1120, PAGE 415

10' MAINTENANCE EASEMENT CONVEYED TO N.P.B.C. W.C.D. (ORB 5430, PG. 1701 & 1708)

NORTHWEST CORNER OF SEC. 34/41/42

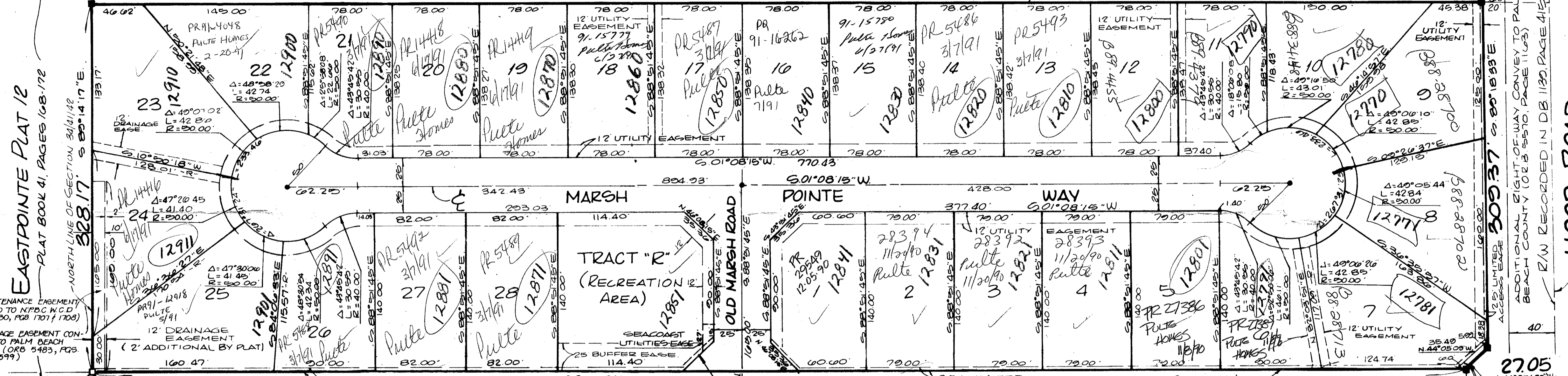
FOUND PALM BEACH COUNTY SEC. CORNER MONUMENT

JOG ROAD (ORB 4778 PG. 1792)

OLD MARSH
PLAT BOOK 58

GOLF CLUB
PAGES 62 THRU 75

Marsh Pointe at Westlakes
SUBDIVISION # DB W DUD
BOOK 63
PAGE 137
FLOOD MAP # 1150
ZONING 87-42
CHAD # 27
TAX 797
ZIP CODE 33413
P.O. NAME SAME AS WESTLAKES



AND BY
CHECKED BY

111, B

0378-002
87-42

63/137

FAHEY & ASSOCIATES
LAND SURVEYORS
4115 WEST PALM BLVD
JUPITER, FLORIDA 33411
PHONE (305) 745-1111

SCALE 1" = 50'
BOOK 40,000-1
DATE SEPT. 88
JOB NO. 40,000

MARSH POINTE AT WESTLAKES OF P.B.G., P.U.D.